

How to download and install the Model Maker Software from the Internet.

On our website www.modelmaker.co.za

Select the REGISTER or LOGIN if you already Registered on the top right of the site. Make sure to complete the security protocol "I'm not a robot"

The screenshot shows the Model Maker Systems website interface. At the top, there is a navigation bar with a logo on the left and links for REGISTER, LOGIN, and a user profile icon on the right. Below this is a secondary navigation bar with links for HOME, PRODUCTS, PRICING, GET A QUOTE, FAQ, TRAINING, DOWNLOADS, ABOUT US, and CONTACT US. The main content area is split into two columns. The left column is titled 'REGISTER NEW USERS' and contains a form with fields for Username, First Name, Last Name, Company/Organisation, Country (a dropdown menu), and E-mail Address. The right column is titled 'LOGIN EXISTING USERS' and contains a form with fields for Username or E-mail and Password. Below the login form is a reCAPTCHA 'I'm not a robot' checkbox and a yellow 'Login' button. At the bottom right, there is a green informational box with a warning icon and text: 'If you registered an account on the previous Model Maker Systems website, please RESET your password before logging in.'

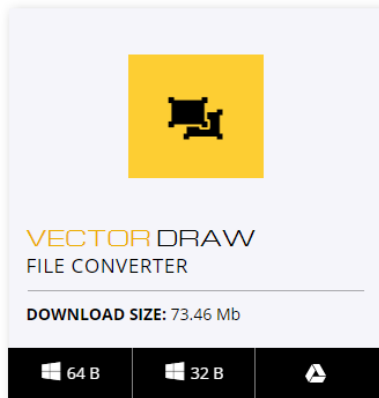
The 2 important links are Software and Utilities.



Use the Software option for all the Model Maker program you want to download.

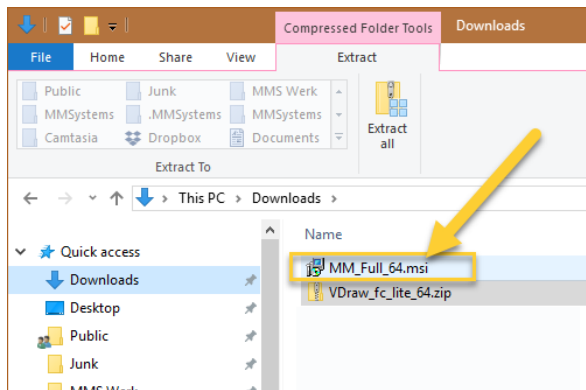


1. Use 64 bit for if you have a 64 bit Computer ad Windows version versions.
2. Use 32 bit if you have a 32bit Windows version.
3. Alternatively use Google Drive for both 32 and 64 bit, if you have trouble downloading it from the first 2 options.



Supporting Software.
To Import and Export DWG/DXF drawings

Use the Utilities option to download Vector Draw.
Download the same version 32bit or 64bit as the Model Maker programs.



The files will download to the default Downloads folder of Windows unless you changed that.

Double click on the .msi file of the Model Maker program to install it.

If you get a Windows warning message: **“the service cannot be started, either.....”** select the **“No to All”** to continue the installation.

To install Vector Draw unzip the VDraw_fc_lite_64/32 to a new folder.

Then run double click both the .msi files to install them.

Name	Date modified
Readme_install_Vdraw_FC.txt	27/09/2018 10:22 ...
setup.exe	27/09/2018 10:20 ...
vdFileConverter4.msi	27/09/2018 10:20 ...
VectorDraw_MMS_64.msi	27/09/2018 10:48 ...

That's it, all installed programs should now work.

Setup file and Registration Information

- The SL type security Key

The software is authorized using the key number and your company account number with Model Maker Systems.

- The Setup File

Because MODEL MAKER SYSTEMS packages are all modular and you have purchased only some of the modules, the Setup File is used to **activate / de-activate** modules. In combination with the unique HL/SL security key the Setup File must be present for the software to run in full access mode. This file must be present in the folder **.MMSYSTEMS** as explained below and it will always have the naming **MMSxxx_xxx.MRP** where the **xxx_xxx** will be your security key number. The Setup File will only be valid for a specific version of the software and it is therefore of utmost importance that you keep a copy of the setup file with each upgrade of the software. This file is not included in any upgrades you may receive.

The setup file and all settings are saved under the user account folders on your computer. The user account is : C:\Users\???? (???? = Your user account folder.)

As example then the setup file for key 2019:638 :

file name : **MMS2019_638.MRP**
 will be in folder : **C:\Users\????\.MMSystems**

User Registration of the Model Maker Systems software

When you run the software for the first time you will be prompted for your company details. All information must be completed to continue. For a SL key you must also enter the SL key number, your company account number and a password.

User Registration : MODEL MAKER (SL - Internet key)

For support please email : support@modelmaker.co.za

SL Key Authentication

Please do not hesitate to contact our support team if you need any information or help. Complete the following fields and you can start working.

User Details

Name: John Surname: Doe
 Company: Model Maker Systems Contact phone No.: (012) 665-0120
 Your Email: jd@modelmaker.co.za Country: South Africa
 Re-enter Email: jd@modelmaker.co.za Industry: Consultant

SL Key Details

SL Security Key No. (eg. 3015:101): 3015:756 Password: ***** [Forgot password?](#)
 Company Account No.: 201381 (must be at least 6 characters long) Show Password

SL Internet key usage terms & conditions : [T&C's read and accepted](#)

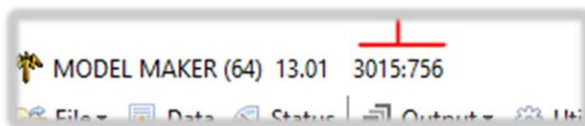
The following terms and conditions apply :

- A softlock key will be authorized on a specific computer.
- An Internet connection must be active once in every 30 days when the program is activated.
- Permission is granted to MMS for the anonymous capture of usage data.

[Click for Help](#)

Please complete all fields

Once you are on the main program screen make sure that your security key number is displayed in the **WINDOWS** header at the top of the screen. If the program is active in TRIAL mode exit, using FILE – EXIT and restart the program again. If you do not get full access activated, contact your supplier for assistance.



Your working data is never saved automatically. You must use the FILE – SAVE options frequently while you are working to prevent the loss of your work in the event of a power failure or other occurrence that will unexpectedly terminate the program.

When you activate the software, it will first try to find a valid HL/SL security key on your computer or the network. Once a key is found it will then try to read the setup file for that specific key.

If no security key is found the following screen will be displayed.

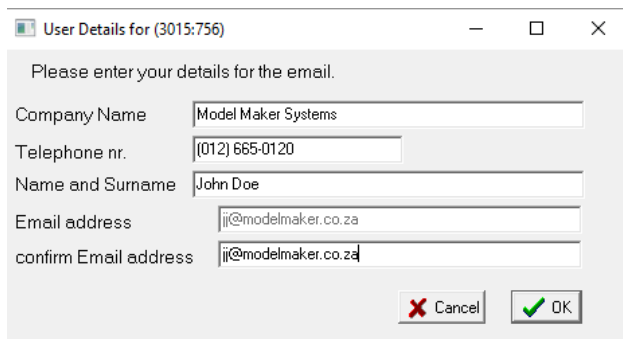
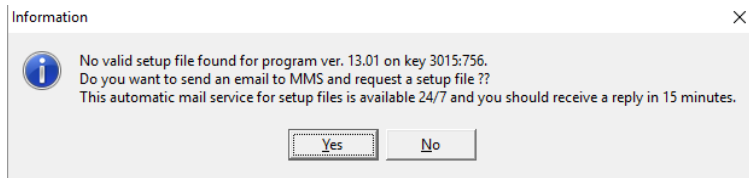


Activation options :

- HL key : Make sure the correct key is connected and use the “Activate a HardLock key” option. If this fails it might be that your computer’s USB is faulty. If possible test the key on other computers and if it does not work contact your software supplier for assistance.
- SL key : Use the option “Activate a SoftLock key”.
- Proxy Settings : For registration of a HL key or authorization of a SL key there must be a un-restricted internet connection. If your internet is controlled by a proxy server then make sure the proxy settings are entered.
- Viewer mode : Model Maker may be used in a free viewer mode. This will allow the viewing of Model Maker data files without any editing capability.
- Trial version : All Model Maker Systems software packages may be used in “trial”-mode for evaluation of the software. A trial version will be active for 30 days only.

If a valid security key is found but a valid setup file is not found, the following can be done :

- If an internet connection is available the software will get a setup file automatically from the Model Maker Systems server.
- If an internet connection is not available an email request for a setup file will be initiated . Complete the prompts and a setup file will be emailed within 30 minutes.



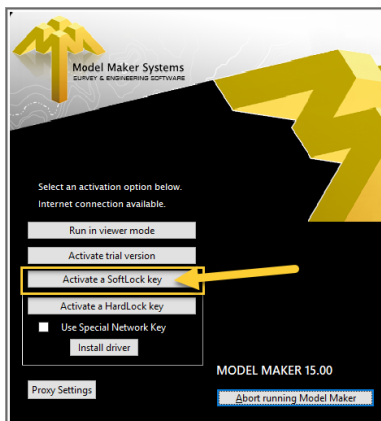
Using the single workstation package on more than one computer

The software may be installed on many computers but can only be used on a single computer at a time. It can be transferred between computers.

Hard Lock (HL) Key :

The USB key may be plugged in/out from a computer at any time. Only the computer with the key will be able to use the software.

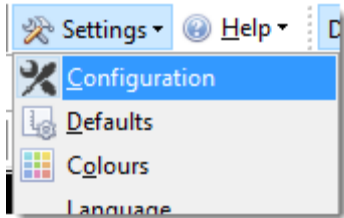
Soft Lock (SL) Key :



The soft lock key can be transferred between computers. Firstly it must be authorized on a computer. To move it then to another computer it must be un-authorized from the computer on which it is active. An un-restricted internet connection must be active whenever it is authorized/un-authorized.

When you start a program that is not active on a computer you will get this screen. Select “Activate a SoftLock key” and follow the prompts and input.

To un-authorize a program from a computer on which it is active, run the program and then from the top menu select SETTINGS – CONFIGURATION .



1. Use the Un-Authorize button and the program will be closed. Make sure your data is saved before un-authorizing the SL key.
2. Use the option “Always Un-authorize on program close” recommended for users that use the same key on different computers frequently.

